



INDEPENDENT ELECTRONIC INSPECTION

Announces a **NEW** Service!

Date: October, 2010
To: All Mechanical Companies
From: IEI Staff

IEI is pleased to announce a new service: Videoscope and pictorial analysis! In addition to our leading edge eddy current tube analysis, IEI has recently acquired state of the art, military spec, Olympus Iplex Videoscopes. This will allow our technicians to take still photos as well as video of any anomaly or area of interest throughout the length of the tube. Our goal is to acquire as much information about tube condition as possible. The more ways that we can gain knowledge of actual, real time, tube conditions, the easier it will be to make more informed decisions about tube maintenance and repairs.

Additionally, we are finding out that there are numerous other areas of interest that we now have access to. They are:

1. confirmation of scale on ID of tube
2. division plate gasket (both ends of machine)
3. inspection of chilled water sensor
4. visual inspection of sacrificial anodes (if applicable) on opposite end
5. shut off valve gasket inspection through opposite end piping
6. condition of opposite end crown sheet and end bells
7. confirmation and visual cause of restricted and/or constricted tubes
8. variations of defects followed with visual confirmation
9. causes and visual of debris buildup in the cavity on opposite end
10. conditions of tubes next to division plate on far end
11. confirmation of metallic chips or other causes of false positive indications
12. measurement (to the nearest .001") of pits or any other ID indication
13. and many more.....

As you can see there are multiple advantages to get visual inspection along with an Eddy Current test. The biggest benefit is that all of the above can be done from the test end. There is no need to remove the opposite end bell!

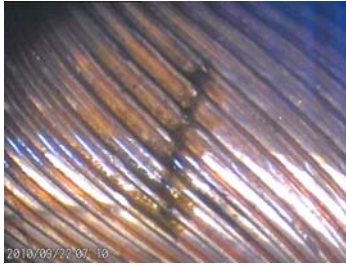
For a limited time IEI is offering this service for \$100 per bundle when done in conjunction with an eddy current test. If a specific visual inspection is required or for special circumstances or quotes, please call for pricing!



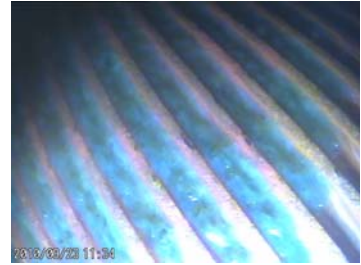
Examples of evidence found with Video Scope



Straight View of Crack



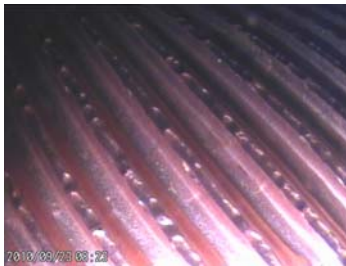
Side view of Crack



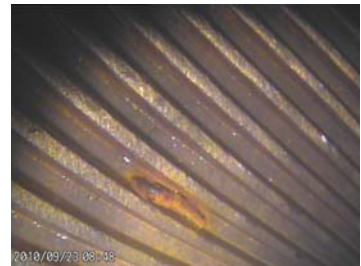
Close up of Scale



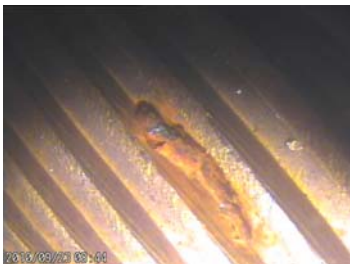
Normal view Internal finning pattern



View of Fin damage



Circ Crack undetected by bobbin. Found with T5



Close up of Circ Crack



View of Valve from inside



Opposite end Crown Sheet